



TORNIER
COVERLOC™
Volar Plate



SYSTEM OVERVIEW

Lag compression with fixed angle fixation.



Stainless Steel Material



The patented COVERLOC™ technology allows fragments to be lagged to the plate for greater construct stability and allows screw placement at pre-determined anatomic angles. The optimized plate profile enables maximum distal placement of the plate to buttress volar-ulnar fragments without stuffing the compartment.



Compression/Lagging



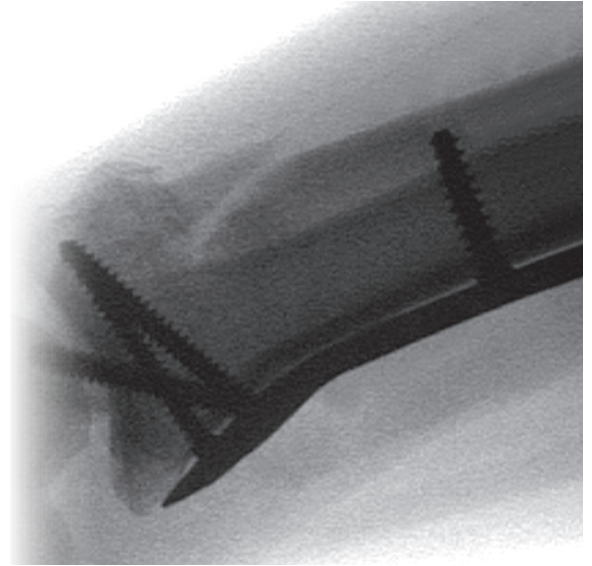
Broad Ulnar Buttress



Low Radial Profile

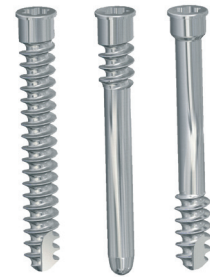


2 Radial Styloid Screws



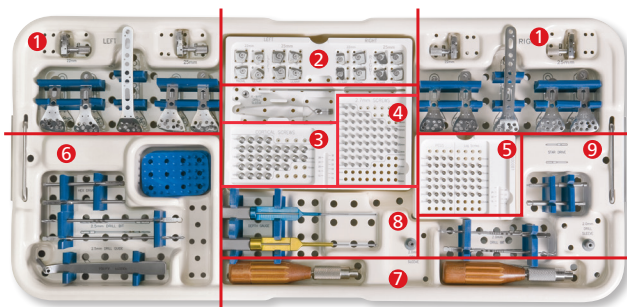
The COVERLOC™ Volar Plate provides the ability to dynamically lag bone fragments to the plate while ensuring the stability of fixed angle fixation, while still providing locking of all distal screws – **a feature not offered by any other volar plate.**

Design Feature	Advantage
COVERLOC™ Technology	<ul style="list-style-type: none"> • Lag screw compression • Locks in fixed screw angles • Minimizes soft tissue abrasion
Optimized Plate Profile	<ul style="list-style-type: none"> • Anatomic volar tilt allows distal placement • Increased volar-ular fragment buttress • Low profile distal lip avoids tendon impingement and overstuffing
Anatomic Screw/ Peg Placement	<ul style="list-style-type: none"> • Two anatomically aligned radial styloid screws • Anatomic screw/peg arrangement provides optimal subchondral support • Interlocking basket effect



Distal Screw Options:

- Threaded Screws
- Pegs
(partially threaded on the volar side)
- Lag Screws
(partially threaded on the dorsal side)



1. Plates and Drill Guides
2. COVERLOC™ Sheath
3. Cortical Screws
4. Threaded Screws
5. Pegs and Lag Screws
6. Proximal Drill Guide, Drill Bits, Drivers
7. Modular Screw Driver Handles
8. Proximal Depth Gauge (top), Distal Depth Gauge (bottom)
9. Distal Drill Sleeves, Drill Bits, Drivers

COVERLOC™ Volar Plates**LEFT PLATES**

Volar Plate - Left	22 mm x 3 Hole	0011205
Volar Plate - Left	22 mm x 4 Hole	0011201
Volar Plate - Left	25 mm x 3 Hole	0011215
Volar Plate - Left	25 mm x 4 Hole	0011211
Volar Plate - Left	22 mm x 8 Hole*	0011203
Volar Plate - Left	28 mm x 4 Hole*	0011221

RIGHT PLATES

Volar Plate - Right	22 mm x 3 Hole	0011206
Volar Plate - Right	22 mm x 4 Hole	0011202
Volar Plate - Right	25 mm x 3 Hole	0011216
Volar Plate - Right	25 mm x 4 Hole	0011212
Volar Plate - Right	22 mm x 8 Hole*	0011204
Volar Plate - Right	28 mm x 4 Hole*	0011222

COVERLOC™ Volar Plate Sheaths

Volar Sheath	22 mm Left-Ulnar	0011208
Volar Sheath	22 mm Right-Ulnar	0011210
Volar Sheath	22/25 mm Left-Radial	0011217
Volar Sheath	22/25 mm Right-Radial	0011219
Volar Sheath	25 mm Left-Ulnar	0011218
Volar Sheath	25 mm Right-Ulnar	0011220

Instrumentation

K-Wire 0.045" x 5"	0012045
2.5 mm Hex Screw Driver Bit	7000001
Star Screw Driver Bit	7000002
2.0 mm Drill Bit	7000020
2.5 mm Drill Bit	7000025

COVERLOC™ Volar Plate Screws**PROXIMAL (CORTICAL) SCREWS**

Cortical Screw	3.3 mm x 10 mm	0013310
Cortical Screw	3.3 mm x 12 mm	0013312
Cortical Screw	3.3 mm x 14 mm	0013314
Cortical Screw	3.3 mm x 16 mm	0013316
Cortical Screw	3.3 mm x 18 mm	0013318

DISTAL SCREWS

Bone Screw	2.7 mm x 10 mm	0014110
Bone Screw	2.7 mm x 12 mm	0014112
Bone Screw	2.7 mm x 14 mm	0014114
Bone Screw	2.7 mm x 16 mm	0014116
Bone Screw	2.7 mm x 18 mm	0014118
Bone Screw	2.7 mm x 20 mm	0014120
Bone Screw	2.7 mm x 22 mm	0014122
Bone Screw	2.7 mm x 24 mm	0014124
Bone Screw	2.7 mm x 26 mm	0014126
Threaded Peg	2.0 mm x 14 mm*	0014314
Threaded Peg	2.0 mm x 16 mm*	0014316
Threaded Peg	2.0 mm x 18 mm*	0014318
Threaded Peg	2.0 mm x 20 mm*	0014320
Threaded Peg	2.0 mm x 22 mm*	0014322
Threaded Peg	2.0 mm x 24 mm*	0014324
Threaded Peg	2.0 mm x 26 mm*	0014326
Partially Threaded Bone Screw (Lag)	2.7 mm x 16 mm*	0014816
Partially Threaded Bone Screw (Lag)	2.7 mm x 18 mm*	0014818
Partially Threaded Bone Screw (Lag)	2.7 mm x 20 mm*	0014820
Partially Threaded Bone Screw (Lag)	2.7 mm x 22 mm*	0014822
Partially Threaded Bone Screw (Lag)	2.7 mm x 24 mm*	0014824

*Special order items, not in standard set.



1023 Cherry Road
 Memphis, TN 38117
 800 238 7117
 901 867 9971
www.wright.com

10801 Nesbitt Avenue South
 Bloomington, MN 55437
 888 867 6437
 952 426 7600
www.tornier.com

Proper surgical procedures and techniques are the responsibility of the medical professional. This material is furnished for information purposes only. Each surgeon must evaluate the appropriateness of the material based on his or her personal medical training and experience. Prior to use of any Tornier implant system, the surgeon should refer to the product package insert for complete warnings, precautions, indications, contraindications, and adverse effects. Package inserts are also available by contacting Wright. Contact information can be found in this document and the package insert.

™ and ® denote Trademarks and Registered Trademarks of Wright Medical Group N.V. or its affiliates.
 ©2016 Wright Medical Group N.V. or its affiliates. All Rights Reserved.